



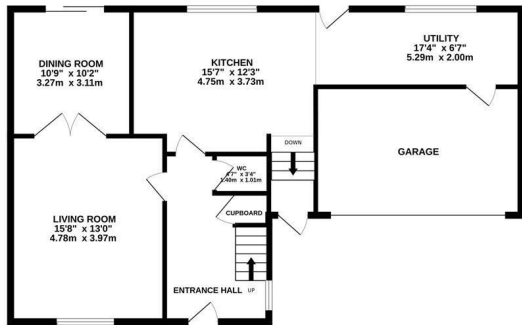
Crecy Close, St. Leonards-On-Sea TN37 7QN

Offers in excess of £500,000

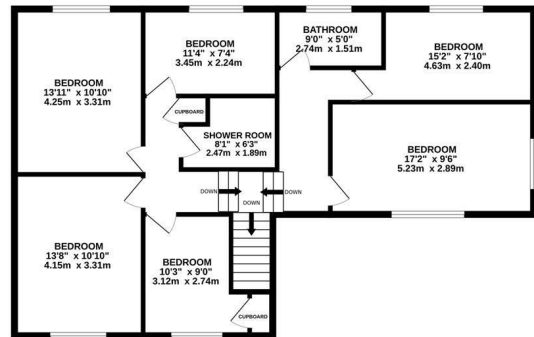


A spacious SIX BEDROOM DETACHED family home with GARAGE and OFF ROAD PARKING situated within a QUIET CUL-DE-SAC on the Northern outskirts of St. Leonards, nearby to the historic town of Battle where there is a high street of independent stores, a mainline railway station and excellent schooling. Spanning two storeys, the accommodation here is accessed through a spacious entrance hall and enjoys GENEROUS PROPORTIONS. The ground floor is arranged as a bright OPEN PLAN LIVING AND DINING ROOM with internal double doors opening to the dining room which enjoys access to the garden and leads through to the FITTED KITCHEN/BREAKFAST ROOM and UTILITY SPACE. The kitchen is fitted with MODERN UNITS and enjoys UNDERFLOOR HEATING, ample worktop space with integrated appliances and access to the front and rear garden, whilst the utility area has access to the integrated garage. There is also a WC/CLOAKROOM on this floor. The SIX DOUBLE BEDROOMS are located on the first floor, accessed via a GRAND SPLIT STAIRCASE, and enjoy generous proportions with the primary measuring an impressive

GROUND FLOOR
946 sq.ft. (87.9 sq.m.) approx.



1ST FLOOR
984 sq.ft. (91.4 sq.m.) approx.



TOTAL FLOOR AREA: 1930 sq.ft. (179.3 sq.m.) approx.

Whilst every attempt has been made to ensure the accuracy of the floorplan contained here, measurements of doors, windows, rooms and any other items are approximate and no responsibility is taken for any error, omission or mis-statement. This plan is for illustrative purposes only and should be used as such by any prospective purchaser. The services, systems and appliances shown have not been tested and no guarantee as to their operability or efficiency can be given.
Made with Metropix ©2026

